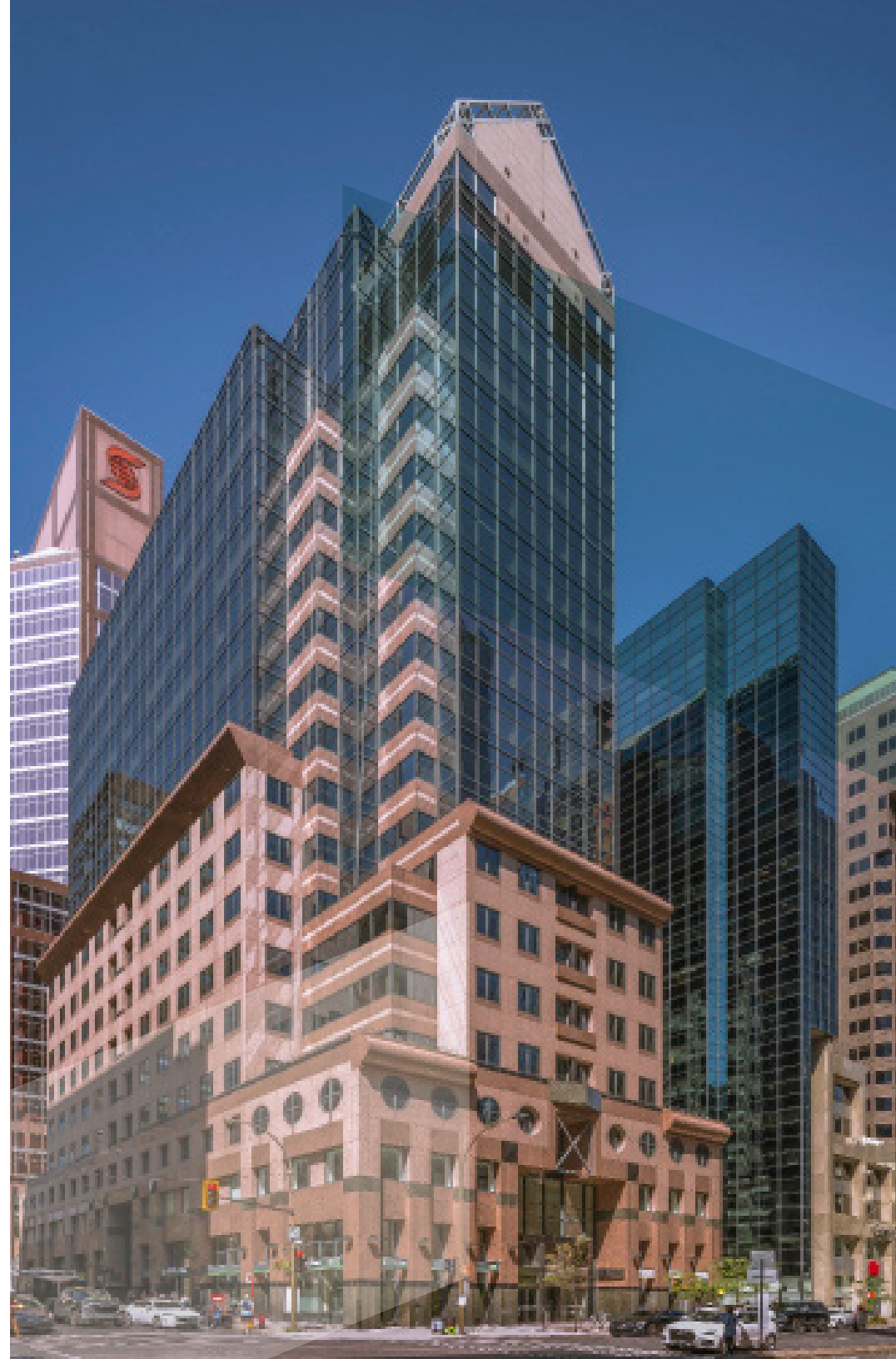




# 999 DE MAISONNEUVE



# 999 DE MAISONNEUVE

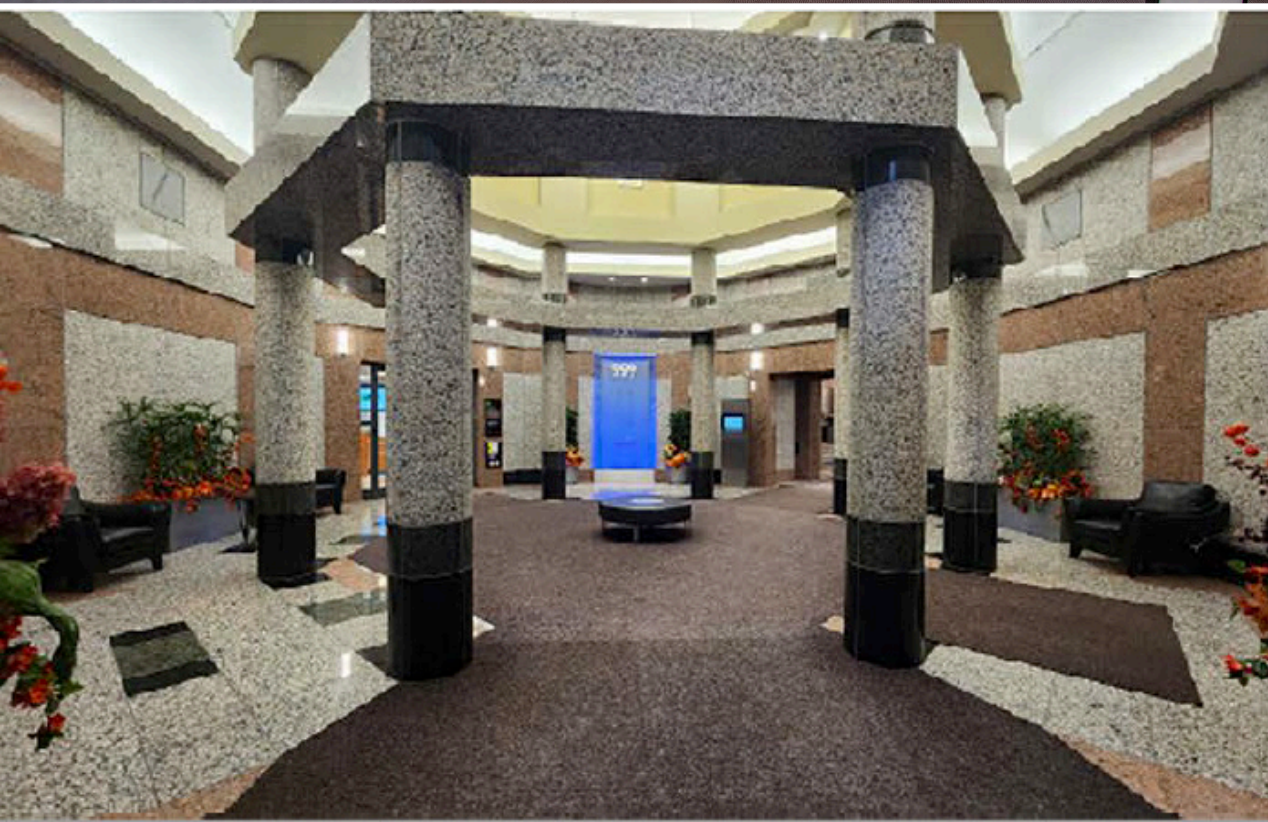
- 18 floors
- Built in 1990
- Building area: 230,942 Sq.Ft.
- BOMA BEST Silver
- Security 24/7
- Underground parking
- Secure bicycle parking
- Conference Centre
- Private gym
- Near Peel and McGill metro stations as well as the downtown REM station
- Connected to the underground network
- Near Dorchester Square
- 900 metres from Mont-Royal walking path access
- In proximity to multiple services, restaurants and boutiques





BGO  
Properties

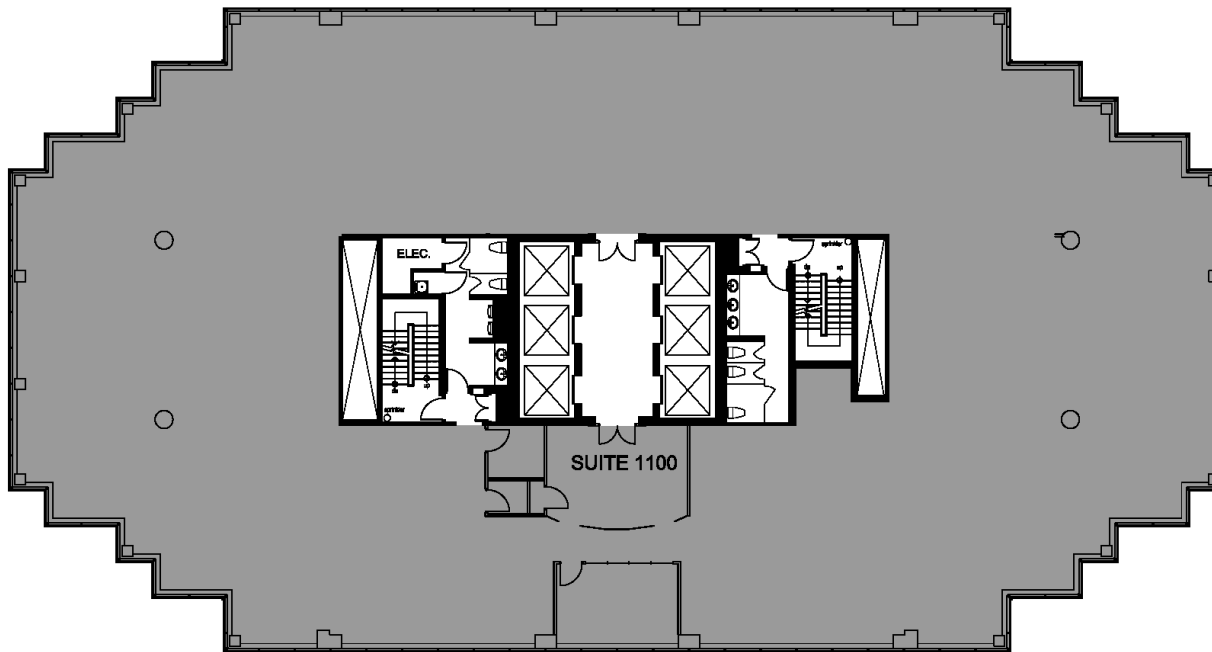






**SUITE**  
**1 100**  
**12,799**  
**SQ.FT.**

Located in a bright and modern environment, this suite is ideal for any company looking to optimize its layout. Completely open, it offers great flexibility to adapt to your specific needs, whether it's collaborative spaces, private offices, or lounging areas.



**ADDITIONAL RENT 2025**

Total	\$29.89
Realty tax	\$10.34
Utilities	\$1.31
Operating expenses	\$18.24

**PARKING**

Not reserved \$280/month+tx

**DOMINIQUE SAUCIER**

*Vice-President, Leasing*

**+ 1 514 686-9497**

**dominique.saucier@bgo.com**

[View Online](#)

[Virtual Tour](#)